



Forging in Ybbsitz

Structure & Activities

Schmiededen in Ybbsitz

Struktur & Aktivitäten



Forging in Ybbsitz

Cultural Landscape, Flood, Need of Protection

Schmiededen in Ybbsitz

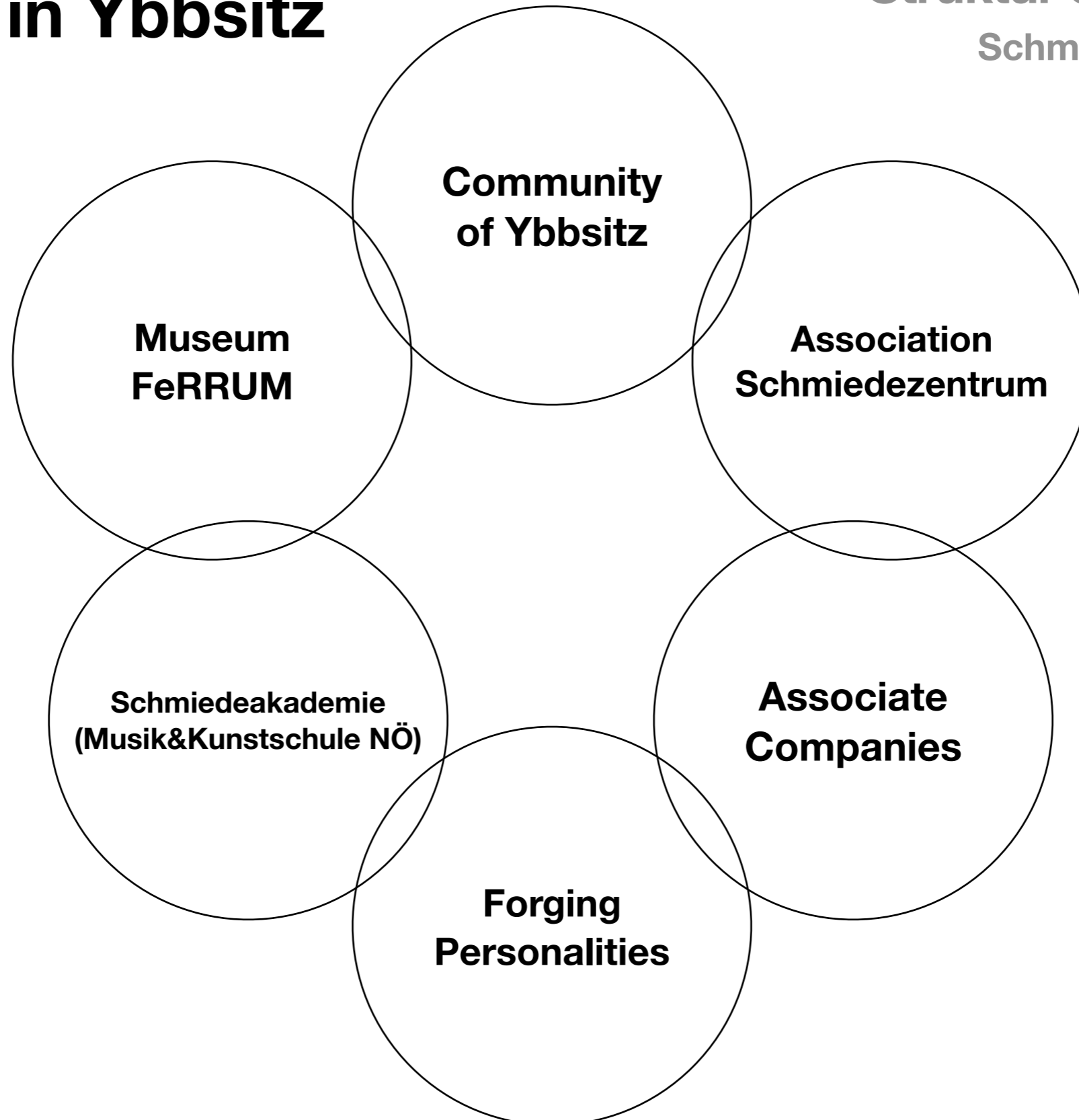
Kulturlandschaft, Hochwasser, Schutzbedarf

Structure & Activities

Forging in Ybbsitz

Struktur & Aktivitäten

Schmieden in Ybbsitz



Community of Ybbsitz

Structure & Activities

Gemeinde Ybbsitz

Struktur & Aktivitäten

„Die Schmiedemeile“ – „the Forging Mile“

Fahrngruber-Hammer – Fahrngruber Forge

Museum of Charcoal Burning

Organisation of Forging Courses

Schmiedeweihnacht – Forging Christmas Market

International Forging Festival FERRACULUM

Knife Market

Specialist Metal Library

Association Schmiedezentrum

Structure & Activities

Verein Schmiedezentrum

Struktur & Aktivitäten

Preparation and support in events and projects of the community of Ybbsitz

Keeping network of blacksmiths

Visiting forging meetings and festivals

Sensitization and further education

Holding events

Museum FeRRUM

Structure & Activities

Museum FeRRUM

Struktur & Aktivitäten

Museum permanent and temporary exhibitions

Cultural education

Shop-FeRRUM

Touristic information and transfer

Holding Events

forumferrum.com artsdepot

Forging Personalities

Structure & Activities

Schmiedeakteure

Struktur & Aktivitäten

Sepp Eybl

Ernst Fahrngruber

Niki Frühwirt

Thomas Hochstadt

Franz Hofinger

Daniel Kolnegg

Georg Kromoser

Uwe Plank

Patrick Rastelli

Michael Sonneck

Emanuel Sonneck

Franz Wahler

Music&Arts Schools Lower Austria

Structure & Activities

Musik&Kunstschulen NÖ

Struktur & Aktivitäten

Schmiedeakademie

– Forging Courses for Teenagers

Associate Companies

Structure & Activities

Riess Emaille Manufacture

Sonneck-Forge

Eybl-Forge

Tannhäuser-Forge

Welser-Family-Forge

Metalworker Wahler

Plank-Forge

Partnerbetriebe
Struktur & Aktivitäten

Fa. Riess (Email-Manufaktur)

Sonneck-Schmiede

Hammerwerk Eybl

Tannhäuser-Schmiede

Schmiede in der Au (Fam. Welser)

Schlossermeister Wahler

Plank-Schmiede



Forging Mile

Cultural Landscape, Flood, Need of Protection

Schmiedemeile

Kulturlandschaft, Hochwasser, Schutzbedarf

A scenic view of a village with traditional houses and a river, illustrating the impact of climate change on cultural landscapes. The image shows a river in the foreground, reflecting the surrounding green hills and buildings. On the left, there are yellow and white houses. In the background, a wooden house with a steep roof is visible. The overall scene is peaceful and idyllic, but the text overlay suggests a focus on climate change adaptation.

Climate Change Adaptation

Cultural Landscape, Flood, Need of Protection

Klimawandelanpassung

Kulturlandschaft, Hochwasser, Schutzbedarf

How will this look like?

Wie kann das aussehen?

**What will happen to
the cultural landscape?**

Was wird mit der
Kulturlandschaft geschehen?

How will it be changed?

Wie wird sie verändert?

**What are the
consequences to our
living environments?**

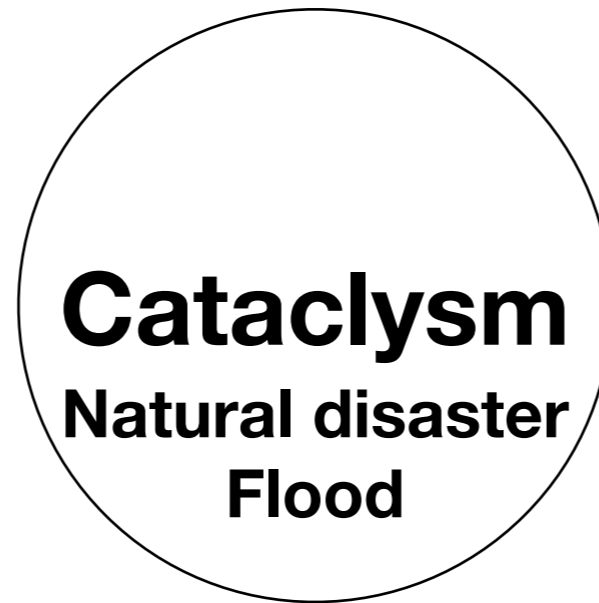
**Was sind die Auswirkungen
auf unser Lebensumfeld?**

1991



2014

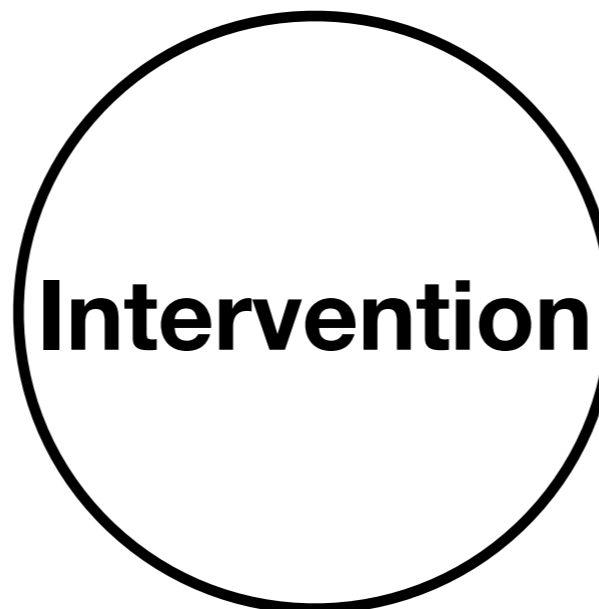




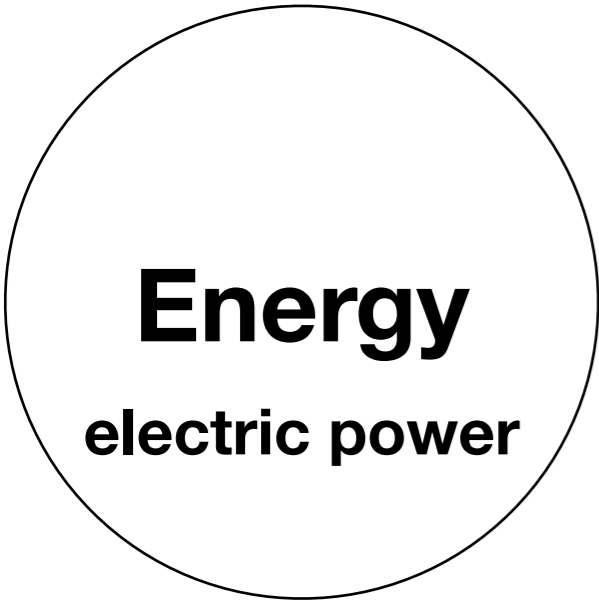
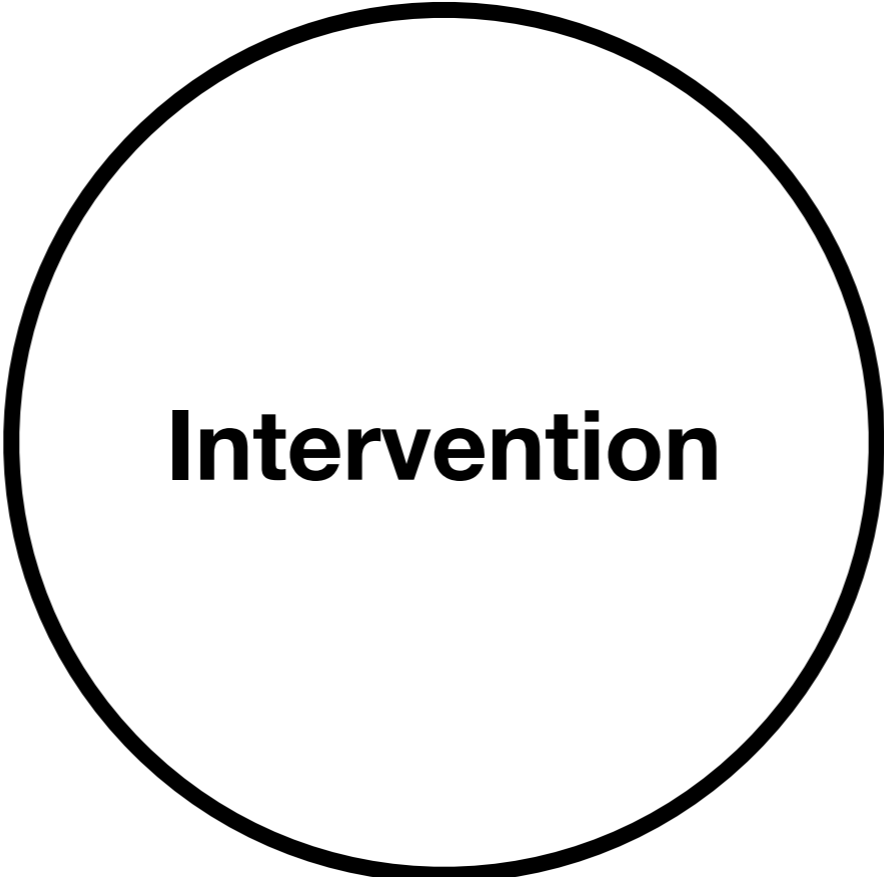
Naturkatastrophe
Überflutungen



Schutzbedarf



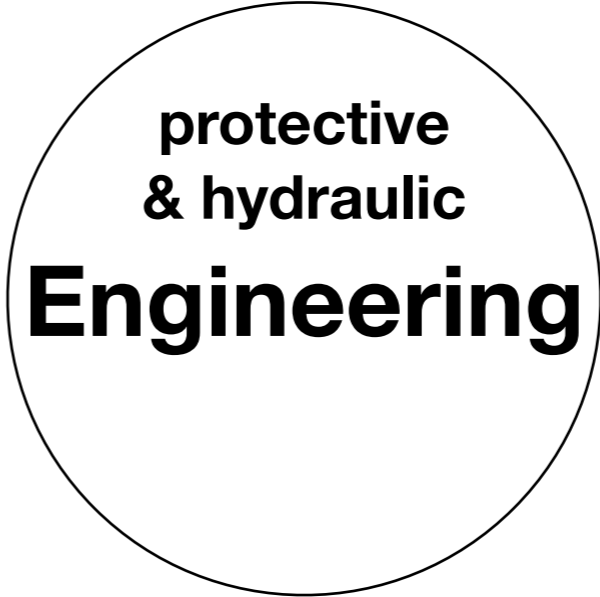
Eingriff



Energieproduktion



Umwelt/Natur



Schutzwasserbau



Ortsbild,
Kulturlandschaft

*Volk begnadet
für das Schöne.*

Bundeshymne der Republik Österreich

*People gifted for
for the beauty of things.*

National Anthem of the Republic of Austria

Cultural landscape

Forging Mile Ybbsitz

Kulturlandschaft
Schmiedemeile Ybbsitz

Schleifen in der Noth
Ybbsitz ~1910
(<https://ybbsitz.topothek.at/>)





~3km



























Cultural landscape

Forging Mile Ybbsitz

**Kulturlandschaft
Schmiedemeile Ybbsitz**

